

meerecompany Inc.

Better Technology Better Tomorrow
High-Tech based **Value making** company

meerecompany

meerecompany

Address. 69-12, Jeongmunsongsan-ro,
Yanggam-myeon, Hwaseong-si,
Gyeonggi-do, Korea
Tel. 031. 350.9997
Web. www.meerecompany.com



Following slides and any accompanying verbal presentation about meerecompany Inc. contain estimates and forward-looking statements. Actual results may differ materially from those expressed or implied as a result of certain risks and uncertainties.

CONTENTS

- **Chapter I. Company Overview**
- **Chapter II. Business Area**
- **▣ Appendix**
- **▣ Q&A**

meerecompany

CHAPTER I. Company Overview

1. Corporate Overview
 2. Corporate Mission & Vision
 3. Corporate History
 4. Business Area
 5. Office & Plant
-
-
-

Overview

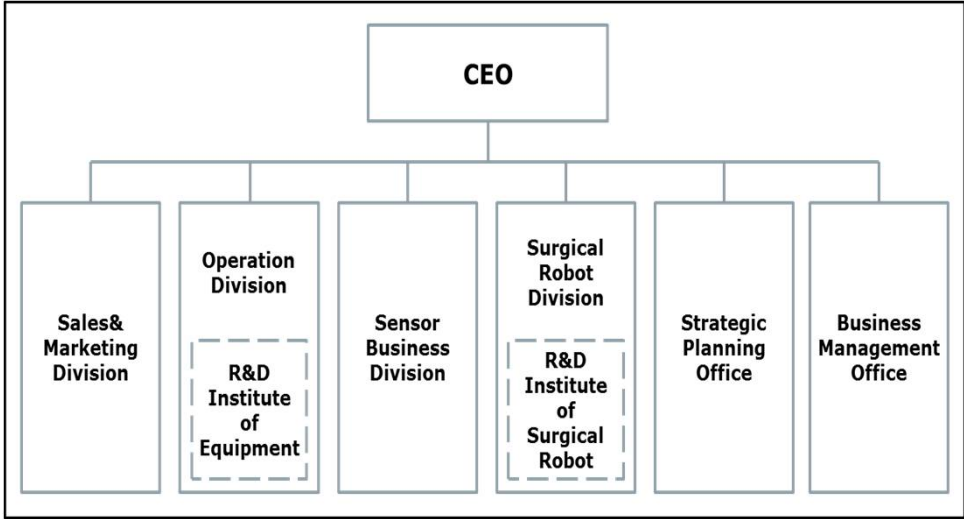
Date of Establishment	Nov 1, 1984
CEO	Kim, Joon Hong
Stock Exchange	KOSDAQ (CODE: 049950), Listed since Jan. 2005
Business Area	<ul style="list-style-type: none"> • Display/ Semiconductor • Manufacturing Equipment • Surgical Robot • 3D Range Camera
HQ	69-12, Jeongmunsongsan-ro, Yanggam-myeon, Hwaseong-si, Gyeonggi-do, Korea
Branch	3F, Tower Dong, Heungdeok IT Valley, 13, Heungdeok 1-ro, Giheung-gu, Yongin-si, Gyeonggi-do, Korea

CEO/ Organization

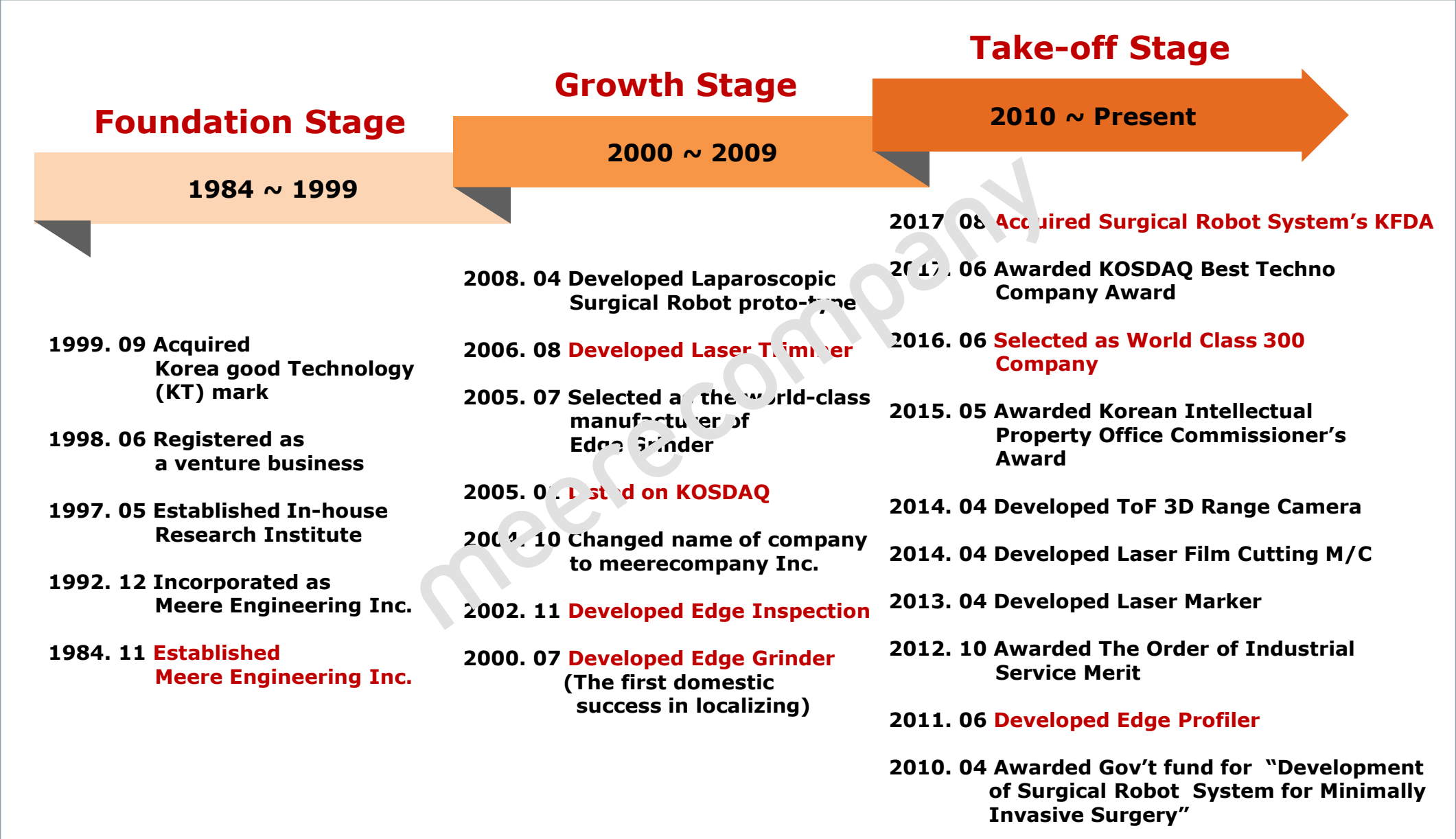


Kim, Joon Hong

- Columbia MBA
- Prudential Investment & Securities



* Total Number of Employees: 330



meerecompany

CHAPTER II. Business Area

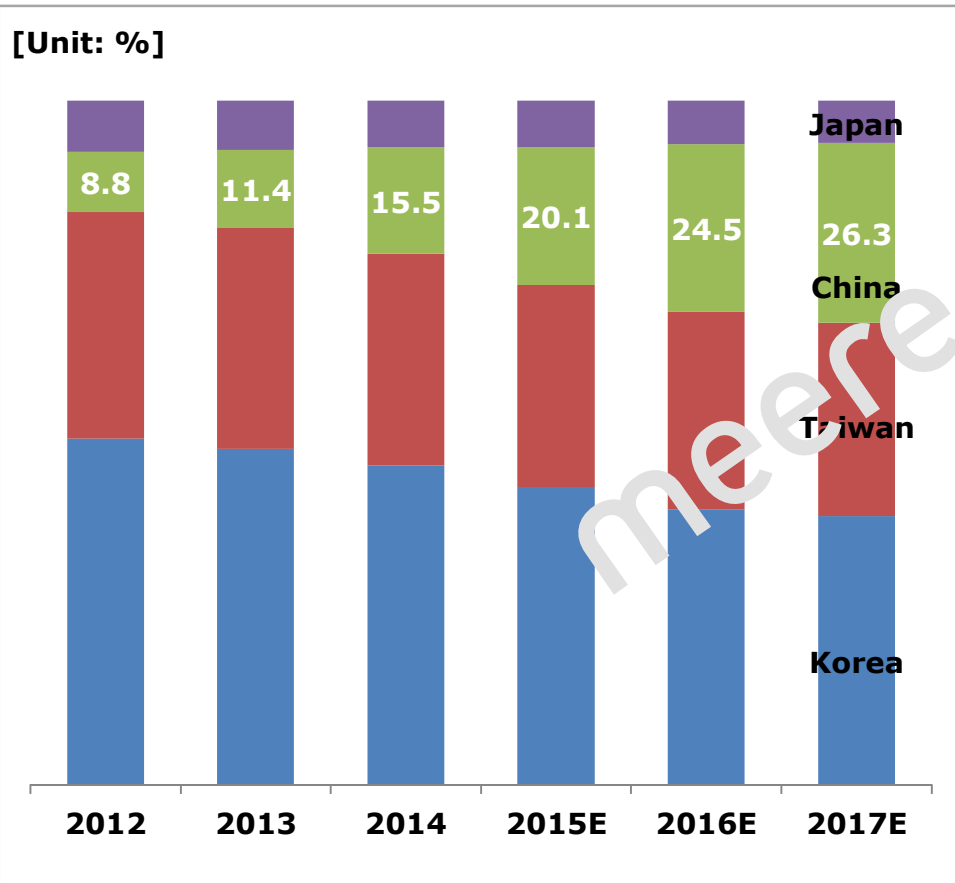
1. Equipment

2. Sensor

3. Surgical Robot

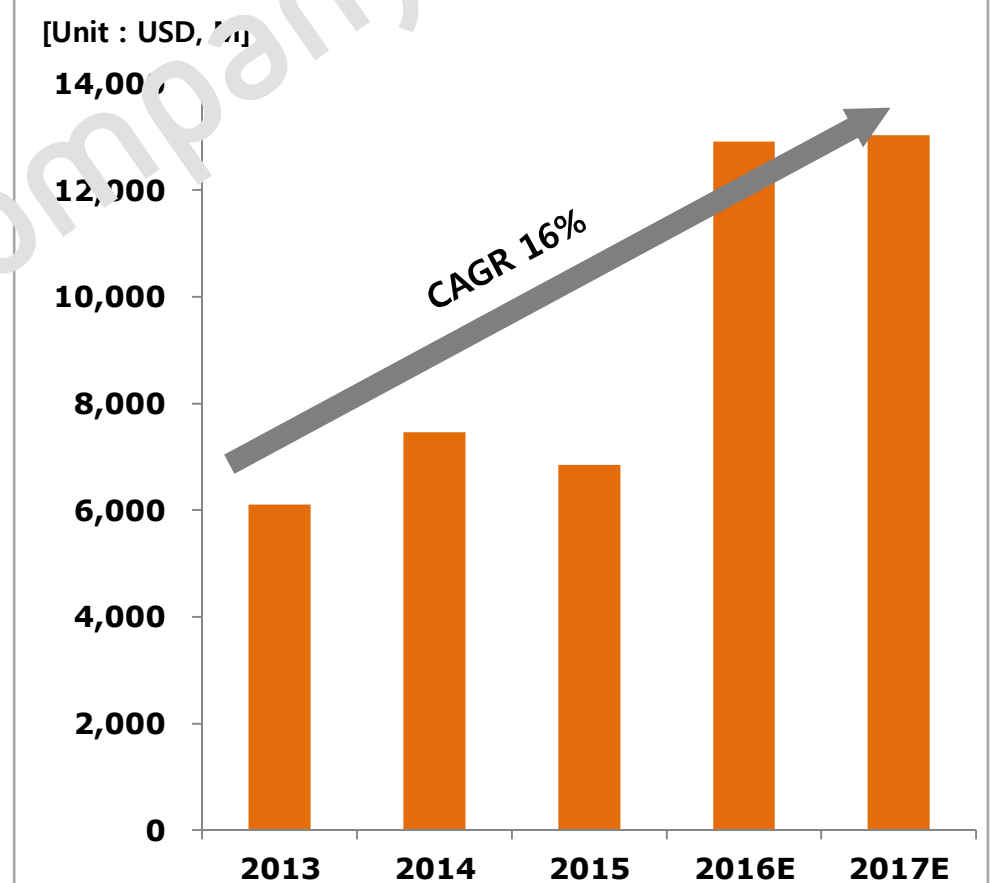
“Display equipment market in 2016 grown by 89%, mainly driven by phase-up investment in China and OLED investment in Korea”

Display production capacity by region



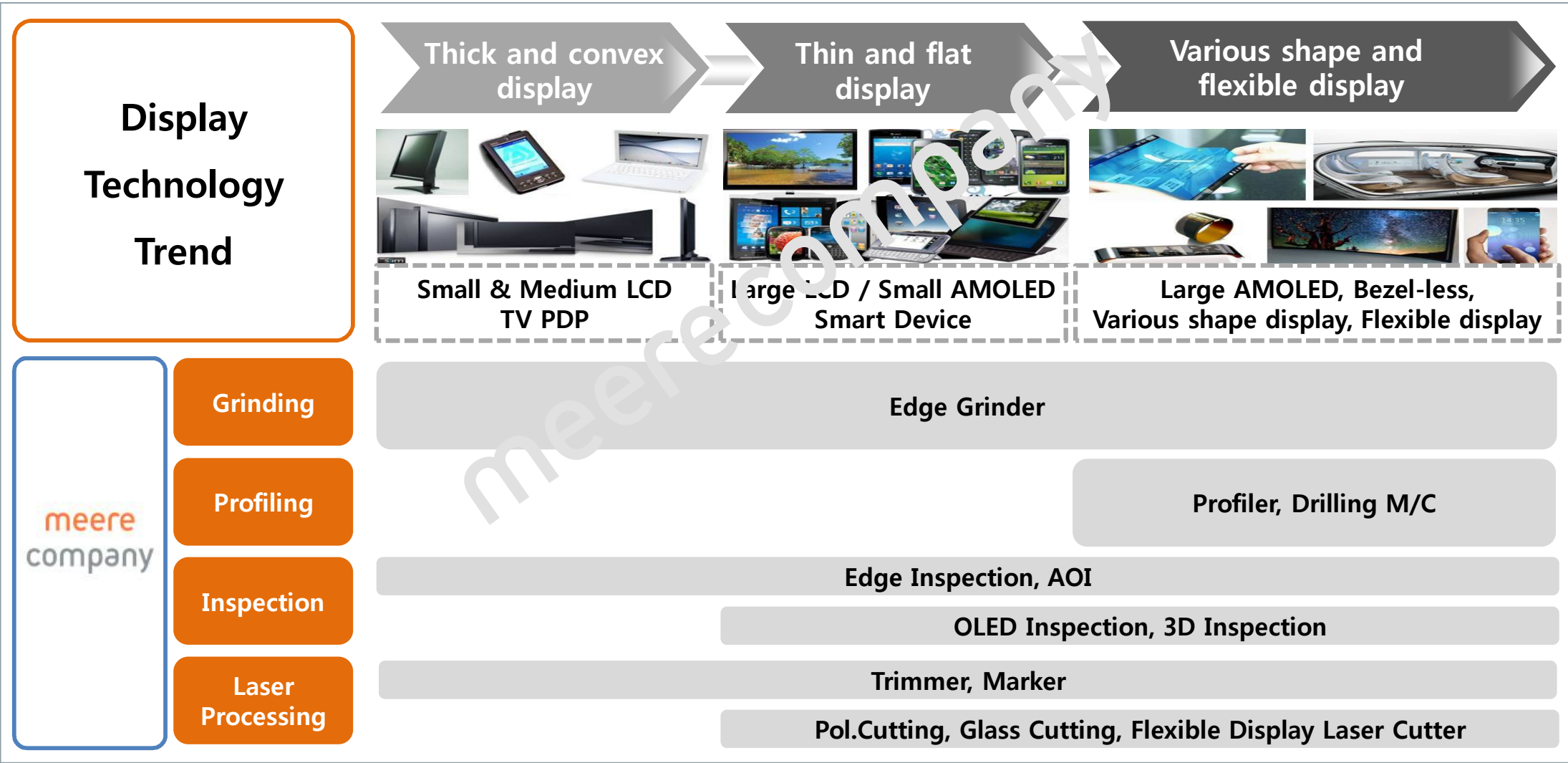
[Sources: HIS, KDBDaewoo Securities]

Display Equipment Market Forecast

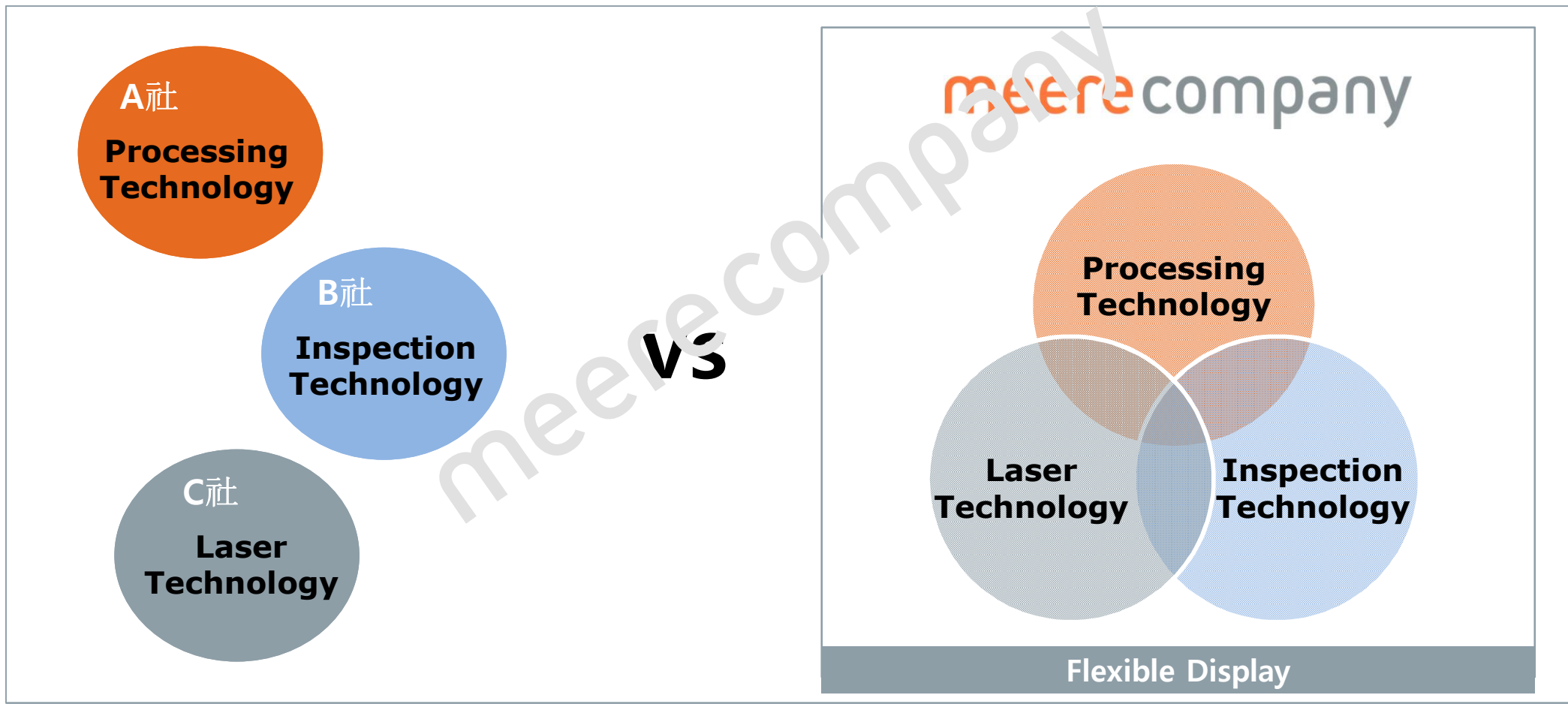


[Sources: IHS, 2016]

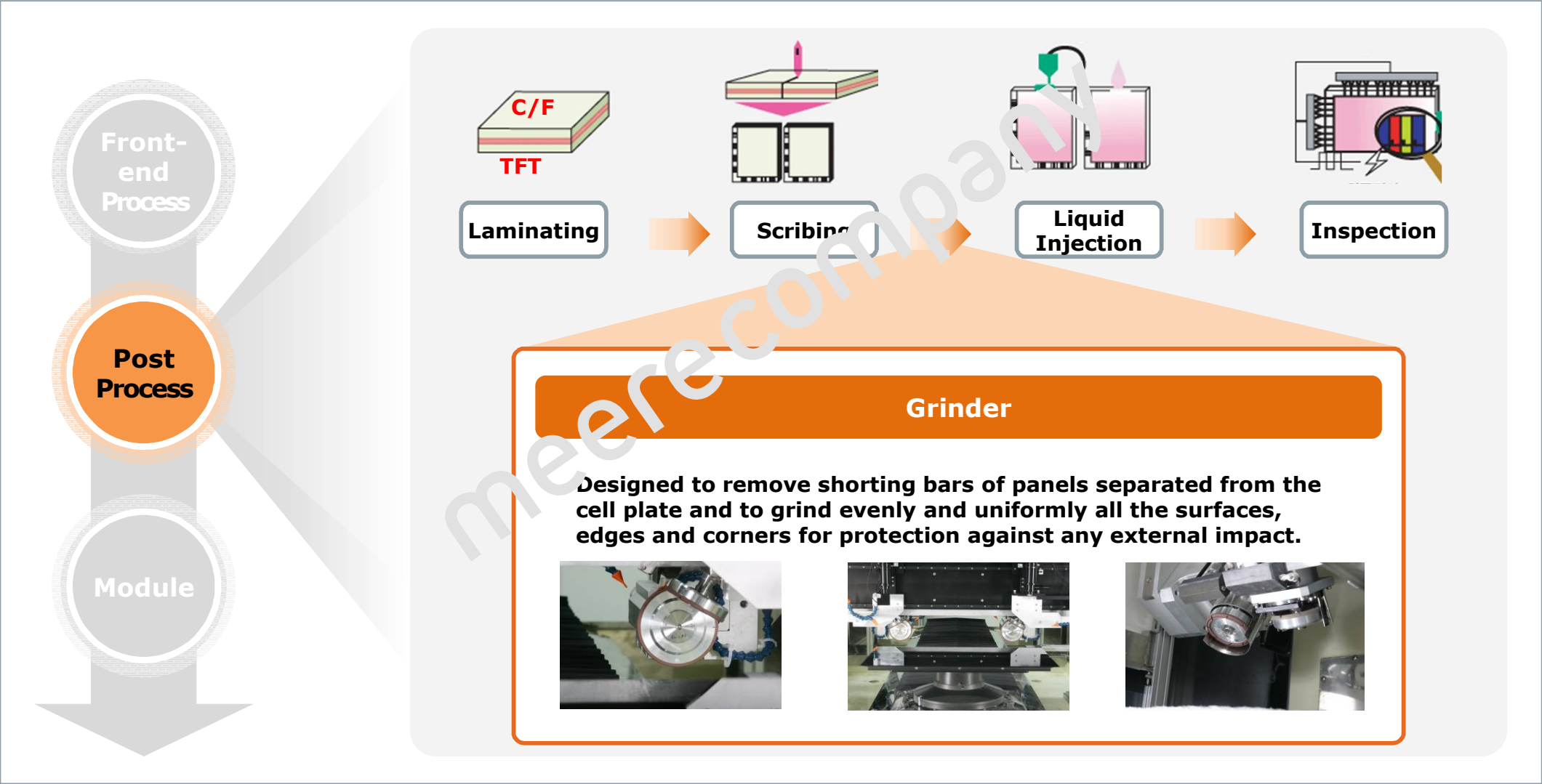
“Ongoing change in display panel trends present in the market, opening up new opportunities to the equipment manufacturers”



“meerecompany's vision to converge technology portfolio to create All-in-One manufacturing equipment”



“Edge Grinding required to maximize sturdiness/ strength of the panel and to realize various design needs”



meerecompany

CHAPTER II. Business Area

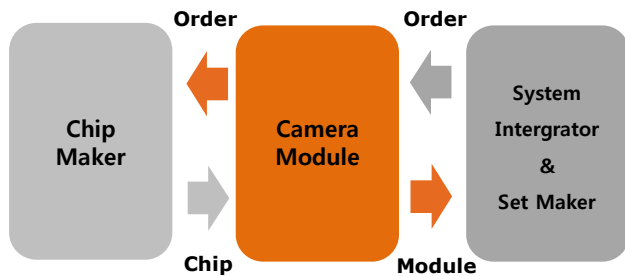
1. Equipment

2. Sensor

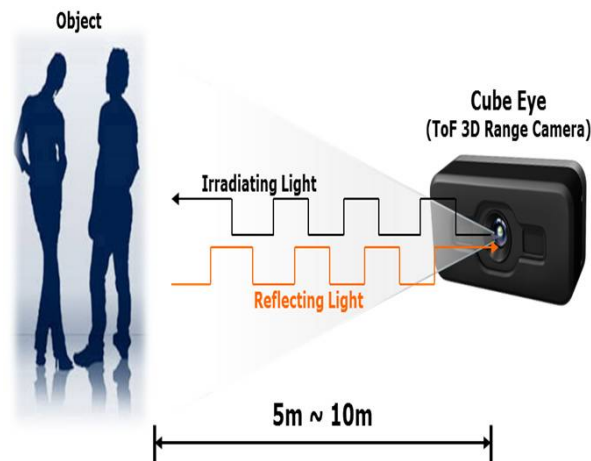
3. Surgical Robot

“Cube Eye ToF(Time of Flight) 3D Range Camera to enable real-time measuring of accurate depth data for object and motion recognition applications”

▶ Value Chain



▶ Technology



▶ Board Type



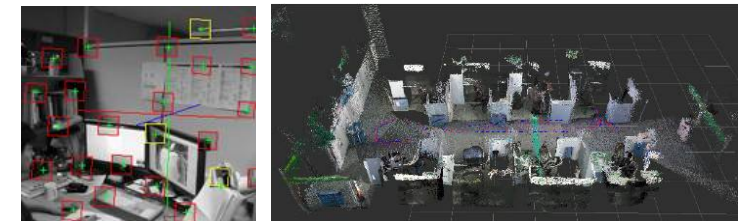
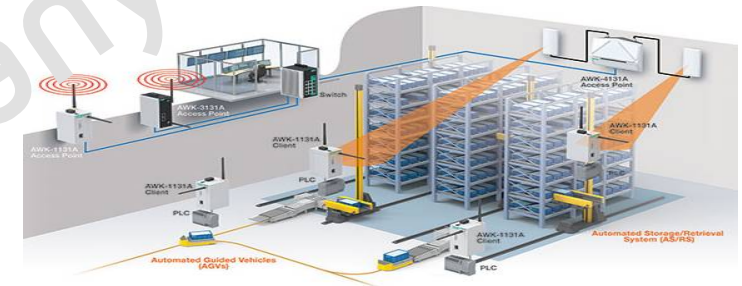
▶ Heat Sink Type



▶ Case Type



AGV (Automated Guided Vehicle)

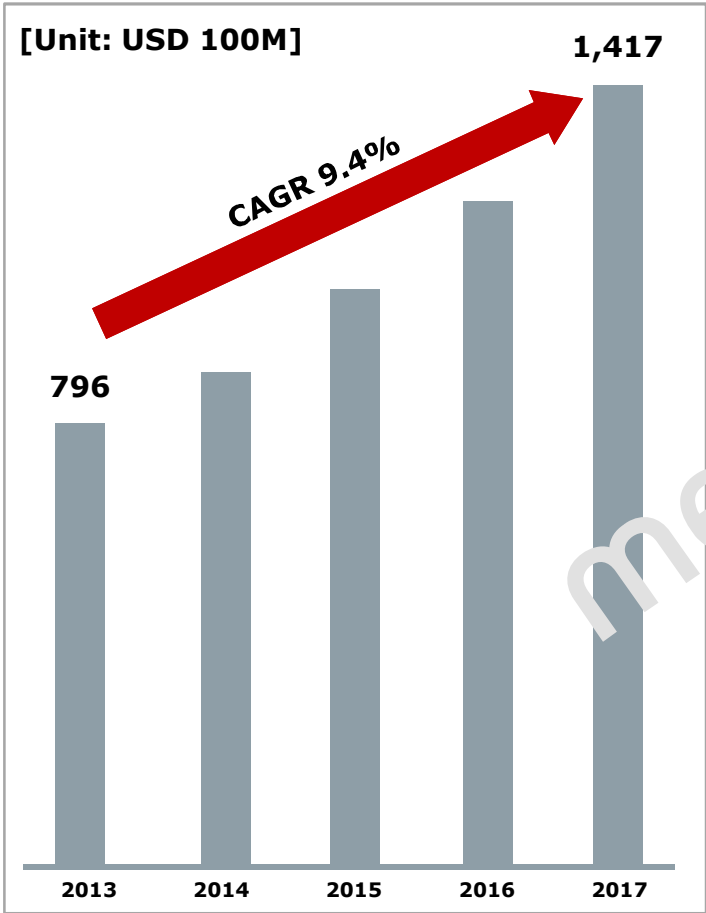


3D IP Camera



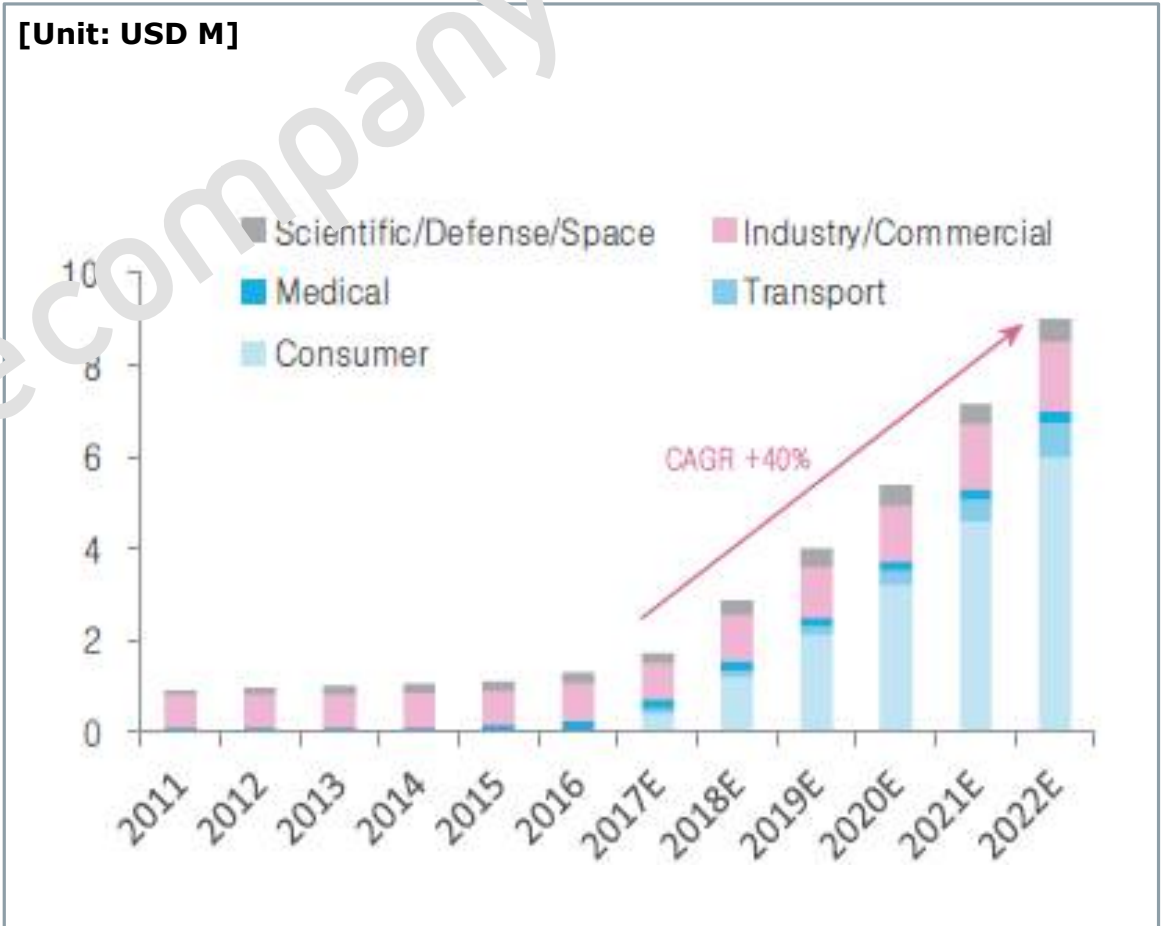
“3D Sensing Solution expected to show constant growth, given increasing demand for IoT commercialization and diffusion of Big Data”

Sensor Market Forecast



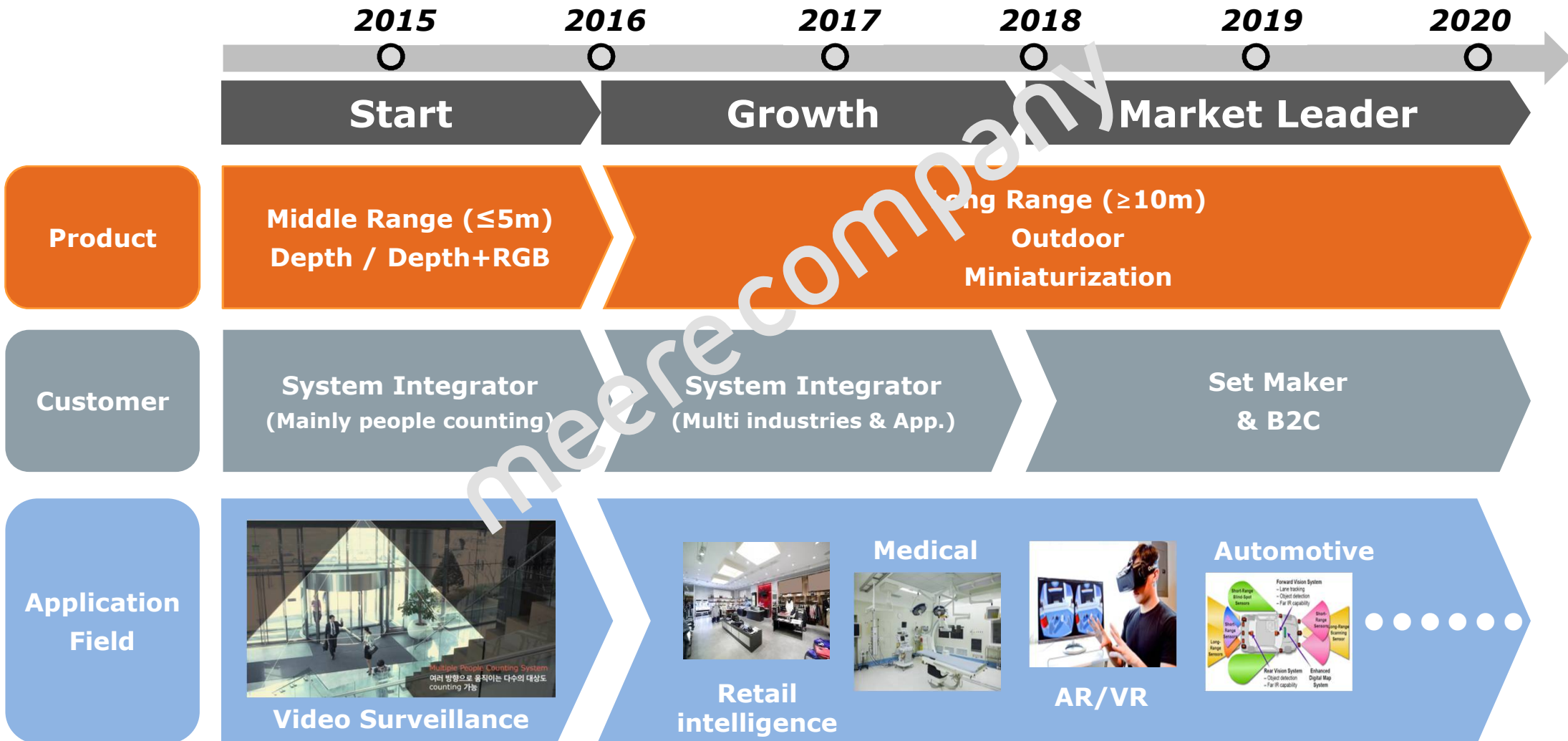
[Source: GIA]

3D Sensing Market Forecast



[Source: Yole Development, KTB securities]

"Cube Eye 3D Range Camera Business Roadmap"



meerecompany

CHAPTER II. Business Area

1. Equipment

2. Sensor

3. Surgical Robot

“Revo-i finished human clinical trials at Yonsei University Hospital in March, 2017 and attained MFDS (a.k.a KFDA) approval in August”

▶ Current Market Practice



▶ Revo-i Roadmap



meere company

meere company

■ Appendix

Appendix – Financial Statements

Balance Sheet

[Unit: KRW M]

	2012	2013	2014	2015	2016	2017
Current Assets	67,589	42,374	41,286	45,631	55,885	121,409
Non-current Assets	43,879	46,221	41,945	43,768	43,666	43,240
Assets	111,468	88,595	83,231	89,399	99,551	164,649
Current liabilities	34,440	16,522	16,868	22,362	26,630	63,990
Non-current liabilities	6,085	2,999	4,776	2,386	1,611	1,843
Liabilities	40,525	19,521	21,644	23,416	28,241	65,833
Capital	3,830	3,830	3,830	3,830	3,830	3,830
Capital surplus	26,152	26,152	26,152	26,152	26,152	26,152
Retained earnings	49,122	47,314	40,320	43,405	50,064	77,056
Other capital	(8,155)	(8,219)	(8,716)	(8,736)	(8,736)	(8,189)
Non-controlling interests	(6)	(3)	1	-	-	-
Equity	70,943	69,074	61,587	64,651	71,310	98,846

Income Statement

[Unit: KRW M]

과목	Annual					
	2012	2013	2014	2015	2016	2017
Revenue	56,335	63,723	44,756	62,404	80,414	181,451
Cost of sales	60,165	44,535	36,015	44,065	58,214	118,006
Gross profit	36,193	19,188	8,741	18,339	22,200	63,445
Selling general admin. expenses	20,533	21,935	15,298	14,941	16,492	26,207
Operating income	15,660	(2,747)	(6,557)	3,398	5,708	37,238
Other gains/losses	(2,381)	(1,319)	(470)	725	1,900	(2,584)
Finance income/costs	(1,476)	(1,762)	(166)	157	190	(1,672)
Share of profit	(21)	1,161	(16)	(306)	(383)	(8)
Profit before tax	11,782	(4,667)	(7,209)	3,974	7,415	32,974
Income Tax expense	(1,027)	(3,616)	114	658	95	4,806
Net income	12,809	(1,051)	(7,323)	3,316	7,320	28,168



Thank you

meerecompany